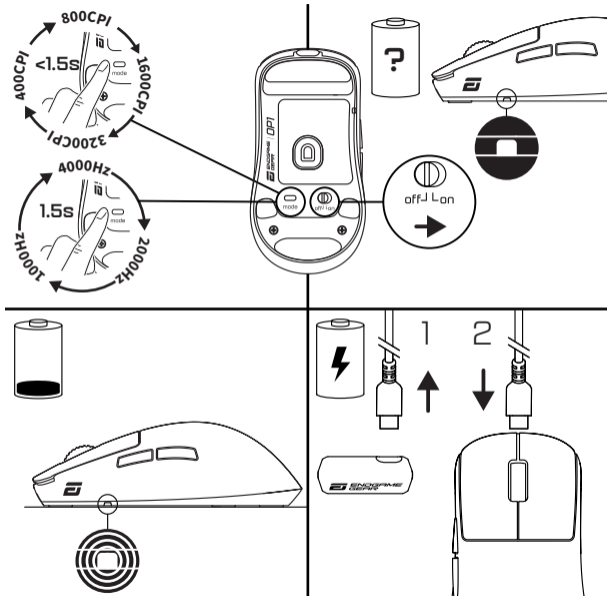
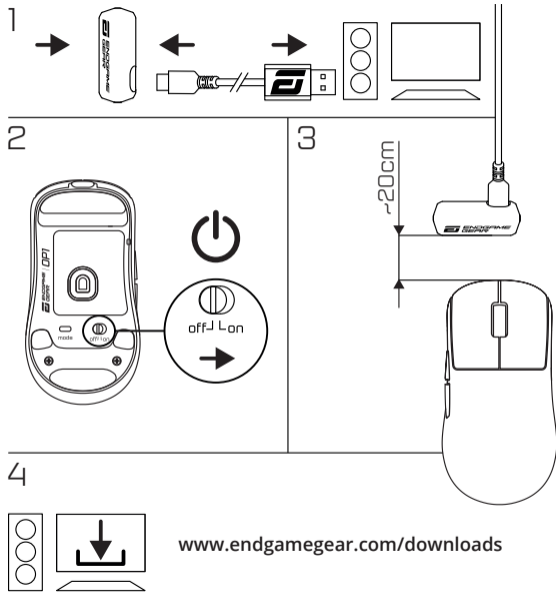
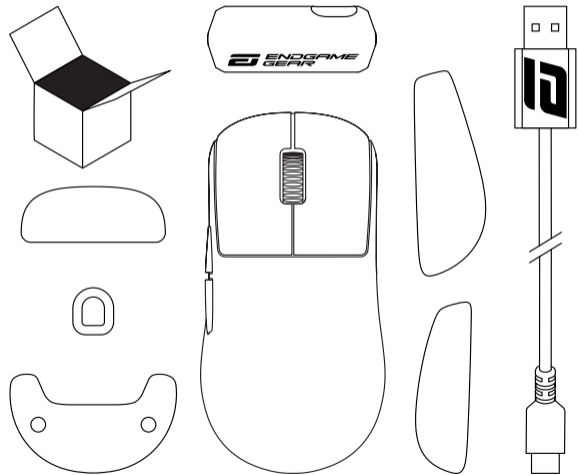
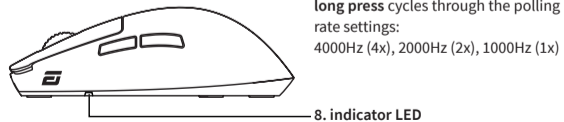
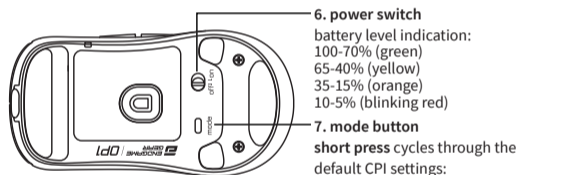
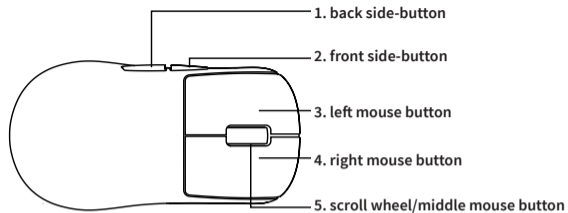


ENDGAME GEAR / OP1W 4k v2

QUICK START GUIDE | SCHNELLSTART-ANLEITUNG | GUIDE DE DÉMARRAGE RAPIDE | GUÍA DE INICIO RÁPIDO | 퀵 스타트 가이드 | クイックスタートガイド | 快速入門指南 | 快速入門指南





DEUTSCH

1. hintere Seitentaste
2. vordere Seitentaste
3. linke Maustaste
4. rechte Maustaste
5. Scrollrad/mittlere Maustaste
6. Ein/Ausschalter
7. Modustaste
8. Anzeige-LED

Française

1. bouton latéral arrière
2. bouton latéral avant
3. bouton gauche de la souris
4. bouton droit de la souris
5. molette de défilement/ bouton central de la souris
6. interrupteur
7. bouton de mode
8. LED d'indication

ESPAÑOL

1. botón lateral trasero
2. botón lateral delantero
3. botón izquierdo del ratón
4. botón derecho del ratón
5. rueda de desplazamiento/ botón central del ratón
6. interruptor de alimentación
7. botón de modo
8. LED indicador

PORTUGUÊS

1. botão lateral de trás
2. botão lateral frontal
3. botão esquerdo do rato
4. botão direito do rato
5. roda de rolagem/ botão do rato médio
6. interruptor de energia
7. botão de modo
8. LED indicador

한국어

1. 뒷면 사이트 버튼
2. 전면 사이트 버튼
3. 마우스 좌측 버튼
4. 마우스 우측 버튼
5. 스크롤 휠/마우스 중간 버튼
6. 전원 스위치
7. 모드 버튼
8. 표시등 LED

日本語

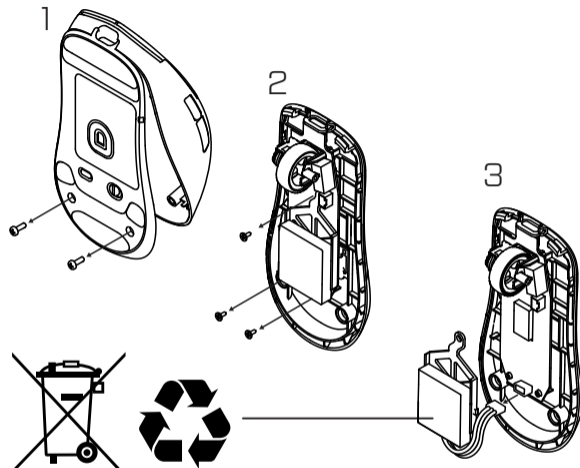
- 1.バックサイドボタン
- 2.フロントサイドボタン
- 3.左マウスボタン
- 4.右マウスボタン
- 5.スクロールホイール/センタークリックボタン
- 6.電源スイッチ
- 7.モードボタン
- 8.インジケータLED

中文简体

1. 鼠标后侧键
2. 鼠标前侧键
3. 鼠标左键
4. 鼠标右键
5. 中置滚轮按键
6. 鼠标电源开关
7. CPI 切换键
8. LED 指示灯

中文繁體

1. 滑鼠後側鍵
2. 滑鼠前側鍵
3. 滑鼠左鍵
4. 滑鼠右鍵
5. 中置滾輪按鍵
6. 滑鼠電源開關
7. CPI 切換鍵
8. LED 指示燈



This device complies with part 15 of the FCC Rules. Operation is subject to the following two conditions:
(1) This device may not cause harmful interference, and (2) This device must accept any interference received, including interference that may cause undesired operation.
EU Directive 2014/53/EU:

OP1w 4k: Proprietary 2.4GHz (2400 - 2483.5MHz): 2402 - 2480MHz; ≤10dBm
HS Dongle: Proprietary 2.4GHz (2400 - 2483.5MHz): 2402 - 2480MHz; ≤8dBm